



2019 Alabama All-State / District Honor Band **Audition Info & Materials**

TUBA

What is All-State / Why Should I Audition

The [All-State Bands](#) are three large ensembles of the most talented band students in the state and our local district. To achieve a spot in one of these bands, students must prepare an audition of scales and two exercises (etudes) for a blind panel of judges. The All-State experience is an unforgettable one as students get to perform with the most talented musicians and conductors in the nation. Additionally, in just preparing for the audition students gain life skills such as determination, discipline and focus.

Simply put, we have one of the best band programs in the state, because we have some of the best kids! Auditioning for All-State will in turn only make our home program stronger. Also, auditioning for all-state (not making it, but simply auditioning) is a requirement for all student leaders of the Southside Band.

Registration Deadline: Friday, Nov. 30th 2018 - \$10.00

Audition Date: Saturday, January 12th 2019 – Albertville HS

District II Honor Band: Friday – Saturday, February 8-9, 2019 - Albertville HS Fine Arts Center
Albertville High School
402 E McCord Ave
Albertville, AL 35950

All State Solo Competition: April 24, 2019 – Huntsville, AL

All State Band Festival: April 25-27, 2019 – Huntsville, AL

Chair Auditions Held at:
1st Baptist Church Huntsville
600 Governors Dr. SW
Huntsville, AL 35801

How to prepare?

Podcasts (Recordings): http://www.southalabama.edu/colleges/music/allstate/hs_tuba.html
(Google search South Alabama All State Band Podcasts)

Begin working now!

Listen to the recordings

Practice your scales everyday so that they feel “easy” at the audition

Stay calm & focused

Ask for help

Take lessons from a teacher who plays your instrument

Helpful Tips:

[“Tips for Success at All-State Auditions” by Chris Clark](#)

[“The Complete Guide to Making All-State” by Jeremy Maclay](#)

ALL-STATE AUDITION REQUIREMENTS

SENIOR HIGH TUBA

Wind players must correctly play a minimum of seven scales and their related arpeggios. All scales must be memorized. Any student found using scale sheets during auditions will be disqualified.

12 Major Scales and Arpeggios:

C, F, Bb, Eb, Ab, Db, Gb, B, E, A, D, G, 1 point for each scale, plus 1 point for each related arpeggio. To be played in eighth notes at a suggested tempo of MM quarter note =120.

Minor Scales and Arpeggios

C Harmonic Minor

A Melodic Minor

1 point for each scale, plus 1 point for each related arpeggio. To be played in eighth notes at a suggested tempo of MM quarter note = 120.

Chromatic Scale

The chromatic scale must be played from low Bb to high F. To be played in eighth notes at a suggested tempo of MM quarter note=120.

Point Breakdown

12 Major Scales and arpeggios	24 points
Chromatic Scale	4 points
Minor Scales	4 points
Prepared Studies	
No. 1	25 points
No. 2	25 points
Tone Quality	10 points
<u>Sight Reading</u>	<u>38 points</u>
Total Possible Score	130 points

Bass Clef

Major Scales and Arpeggios

♩ = 120

One Octave

Revised 2012

The image displays a musical score for Major Scales and Arpeggios in Bass Clef, One Octave, Revised 2012. The score is organized into 12 staves, each representing a different major scale. The scales are: C, F, Bb, Eb, Ab, Db, Gb, B, E, A, D, and G. Each staff shows the scale notes and arpeggios in a rhythmic pattern. The tempo is marked as quarter note = 120. The key signatures range from no sharps or flats to two sharps.

Staff	Scale	Key Signature
1	C	No sharps or flats
2	F	One flat (Bb)
3	Bb	Two flats (Bb, Eb)
4	Eb	Three flats (Bb, Eb, Ab)
5	Ab	Four flats (Bb, Eb, Ab, Db)
6	Db	Five flats (Bb, Eb, Ab, Db, Gb)
7	Gb	Six flats (Bb, Eb, Ab, Db, Gb, Cb)
8	B	Two sharps (F#, C#)
9	E	Three sharps (F#, C#, G#)
10	A	Four sharps (F#, C#, G#, D#)
11	D	Five sharps (F#, C#, G#, D#, A#)
12	G	Two sharps (F#, C#)

Minor Scales for All State Band Auditions

Treble Clef Instruments

Revised 2012

$\text{♩} = 120$

Two Octaves

C harmonic minor

Musical notation for the C harmonic minor scale, two octaves, treble clef. The scale is written in a single line of music, starting on middle C (C4) and ending on C6. The notes are C4, B3, A3, G3, F3, E3, D3, C3, B2, A2, G2, F2, E2, D2, C2, B1, A1, G1, F1, E1, D1, C1, B0, A0, G0, F0, E0, D0, C0, B-1, A-1, G-1, F-1, E-1, D-1, C-1, B-2, A-2, G-2, F-2, E-2, D-2, C-2, B-3, A-3, G-3, F-3, E-3, D-3, C-3, B-4, A-4, G-4, F-4, E-4, D-4, C-4, B-5, A-5, G-5, F-5, E-5, D-5, C-5, B-6, A-6, G-6, F-6, E-6, D-6, C-6. The notation includes a treble clef, a key signature of two flats (Bb and Eb), and a common time signature (C). The scale is written in a single line of music, starting on middle C (C4) and ending on C6. The notes are C4, B3, A3, G3, F3, E3, D3, C3, B2, A2, G2, F2, E2, D2, C2, B1, A1, G1, F1, E1, D1, C1, B0, A0, G0, F0, E0, D0, C0, B-1, A-1, G-1, F-1, E-1, D-1, C-1, B-2, A-2, G-2, F-2, E-2, D-2, C-2, B-3, A-3, G-3, F-3, E-3, D-3, C-3, B-4, A-4, G-4, F-4, E-4, D-4, C-4, B-5, A-5, G-5, F-5, E-5, D-5, C-5, B-6, A-6, G-6, F-6, E-6, D-6, C-6.

A melodic minor

Musical notation for the A melodic minor scale, two octaves, treble clef. The scale is written in a single line of music, starting on A3 and ending on A6. The notes are A3, G3, F3, E3, D3, C3, B2, A2, G2, F2, E2, D2, C2, B1, A1, G1, F1, E1, D1, C1, B0, A0, G0, F0, E0, D0, C0, B-1, A-1, G-1, F-1, E-1, D-1, C-1, B-2, A-2, G-2, F-2, E-2, D-2, C-2, B-3, A-3, G-3, F-3, E-3, D-3, C-3, B-4, A-4, G-4, F-4, E-4, D-4, C-4, B-5, A-5, G-5, F-5, E-5, D-5, C-5, B-6, A-6. The notation includes a treble clef, a key signature of two sharps (F# and C#), and a common time signature (C). The scale is written in a single line of music, starting on A3 and ending on A6. The notes are A3, G3, F3, E3, D3, C3, B2, A2, G2, F2, E2, D2, C2, B1, A1, G1, F1, E1, D1, C1, B0, A0, G0, F0, E0, D0, C0, B-1, A-1, G-1, F-1, E-1, D-1, C-1, B-2, A-2, G-2, F-2, E-2, D-2, C-2, B-3, A-3, G-3, F-3, E-3, D-3, C-3, B-4, A-4, G-4, F-4, E-4, D-4, C-4, B-5, A-5, G-5, F-5, E-5, D-5, C-5, B-6, A-6.

One Octave

C harmonic minor

Musical notation for the C harmonic minor scale, one octave, treble clef. The scale is written in a single line of music, starting on C4 and ending on C5. The notes are C4, B3, A3, G3, F3, E3, D3, C3, B2, A2, G2, F2, E2, D2, C2, B1, A1, G1, F1, E1, D1, C1, B0, A0, G0, F0, E0, D0, C0, B-1, A-1, G-1, F-1, E-1, D-1, C-1, B-2, A-2, G-2, F-2, E-2, D-2, C-2, B-3, A-3, G-3, F-3, E-3, D-3, C-3, B-4, A-4, G-4, F-4, E-4, D-4, C-4. The notation includes a treble clef, a key signature of two flats (Bb and Eb), and a common time signature (C). The scale is written in a single line of music, starting on C4 and ending on C5. The notes are C4, B3, A3, G3, F3, E3, D3, C3, B2, A2, G2, F2, E2, D2, C2, B1, A1, G1, F1, E1, D1, C1, B0, A0, G0, F0, E0, D0, C0, B-1, A-1, G-1, F-1, E-1, D-1, C-1, B-2, A-2, G-2, F-2, E-2, D-2, C-2, B-3, A-3, G-3, F-3, E-3, D-3, C-3, B-4, A-4, G-4, F-4, E-4, D-4, C-4.

A melodic minor

Musical notation for the A melodic minor scale, one octave, treble clef. The scale is written in a single line of music, starting on A3 and ending on A4. The notes are A3, G3, F3, E3, D3, C3, B2, A2, G2, F2, E2, D2, C2, B1, A1, G1, F1, E1, D1, C1, B0, A0, G0, F0, E0, D0, C0, B-1, A-1, G-1, F-1, E-1, D-1, C-1, B-2, A-2, G-2, F-2, E-2, D-2, C-2, B-3, A-3, G-3, F-3, E-3, D-3, C-3, B-4, A-4. The notation includes a treble clef, a key signature of two sharps (F# and C#), and a common time signature (C). The scale is written in a single line of music, starting on A3 and ending on A4. The notes are A3, G3, F3, E3, D3, C3, B2, A2, G2, F2, E2, D2, C2, B1, A1, G1, F1, E1, D1, C1, B0, A0, G0, F0, E0, D0, C0, B-1, A-1, G-1, F-1, E-1, D-1, C-1, B-2, A-2, G-2, F-2, E-2, D-2, C-2, B-3, A-3, G-3, F-3, E-3, D-3, C-3, B-4, A-4.

Bass Clef Instruments

One Octave

C harmonic minor

Musical notation for the C harmonic minor scale, one octave, bass clef. The scale is written in a single line of music, starting on C3 and ending on C4. The notes are C3, B2, A2, G2, F2, E2, D2, C2, B1, A1, G1, F1, E1, D1, C1, B0, A0, G0, F0, E0, D0, C0, B-1, A-1, G-1, F-1, E-1, D-1, C-1, B-2, A-2, G-2, F-2, E-2, D-2, C-2, B-3, A-3, G-3, F-3, E-3, D-3, C-3. The notation includes a bass clef, a key signature of two flats (Bb and Eb), and a common time signature (C). The scale is written in a single line of music, starting on C3 and ending on C4. The notes are C3, B2, A2, G2, F2, E2, D2, C2, B1, A1, G1, F1, E1, D1, C1, B0, A0, G0, F0, E0, D0, C0, B-1, A-1, G-1, F-1, E-1, D-1, C-1, B-2, A-2, G-2, F-2, E-2, D-2, C-2, B-3, A-3, G-3, F-3, E-3, D-3, C-3.

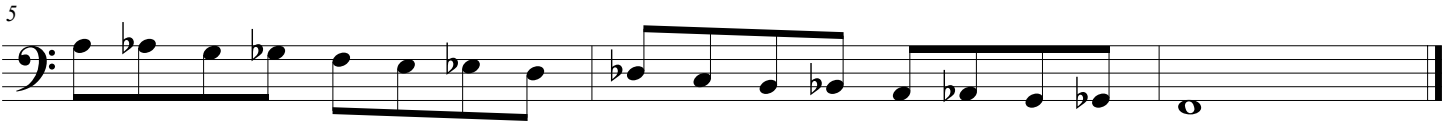
A melodic minor

Musical notation for the A melodic minor scale, one octave, bass clef. The scale is written in a single line of music, starting on A2 and ending on A3. The notes are A2, G2, F2, E2, D2, C2, B1, A1, G1, F1, E1, D1, C1, B0, A0, G0, F0, E0, D0, C0, B-1, A-1, G-1, F-1, E-1, D-1, C-1, B-2, A-2, G-2, F-2, E-2, D-2, C-2, B-3, A-3. The notation includes a bass clef, a key signature of two sharps (F# and C#), and a common time signature (C). The scale is written in a single line of music, starting on A2 and ending on A3. The notes are A2, G2, F2, E2, D2, C2, B1, A1, G1, F1, E1, D1, C1, B0, A0, G0, F0, E0, D0, C0, B-1, A-1, G-1, F-1, E-1, D-1, C-1, B-2, A-2, G-2, F-2, E-2, D-2, C-2, B-3, A-3.

All State Chromatic Scales

High School - Revised 2012

Trombone, Baritone B.C.



8 Tuba



12



All State Etude Series C HSL Tuba

Adagio semplice

♩=58

Measures 1-4: Bass clef, 4/4 time signature. The music consists of a sequence of eighth notes with slurs and dynamic markings. Measure 1: *f* to *mp*. Measure 2: *f* to *mp*. Measure 3: *f* to *mp*. Measure 4: *f* to *mp*.

Measures 5-8: Bass clef, 4/4 time signature. Measure 5: *f* to *mp*. Measure 6: *f* to *mp*. Measure 7: *mf*. Measure 8: *mp* to *p*. Includes triplets and slurs.

Measures 9-11: Bass clef, 4/4 time signature. Measure 9: *f*. Measure 10: *f*. Measure 11: *f*. Includes triplets and sextuplets.

Measures 12-14: Bass clef, 4/4 time signature. Measure 12: *f*. Measure 13: *f*. Measure 14: *mp* to *p*. Includes triplets and slurs.

Più mosso

♩=66

Measures 15-18: Bass clef, 4/4 time signature. Measure 15: *mf*. Measure 16: *mp*. Measure 17: *mp*. Measure 18: *f*. Includes triplets and slurs.

Measures 19-21: Bass clef, 4/4 time signature. Measure 19: *f*. Measure 20: *f*. Measure 21: *f*. Includes slurs and dynamics.

Tempo primo

♩=58

Measures 22-24: Bass clef, 4/4 time signature. Measure 22: *mp*. Measure 23: *mp*. Measure 24: *mp*. Includes triplets and slurs.

All State Etude Series C HST Tuba

Alla marcia moderato

♩=112

Measures 1-8. Dynamics: *f*

9

Measures 9-16. Dynamics: *mf*

17

Measures 17-23. Dynamics: *f*

24

Measures 24-29. Dynamics: *mp*, *mf*, *f*

30

Measures 30-37. Dynamics: *ff*

38

Measures 38-47. Dynamics: *mp*

48

Measures 48-54. Dynamics: *f*

55

Measures 55-59. Dynamics: *f*

60

Measures 60-64. Dynamics: *ff*