

F HORN

Major Scales and Arpeggios

One Octave

Revised 2012

$\text{♩} = 120$

The image displays a musical score for F Horn, consisting of 12 staves, each representing a different instrument. The instruments are: C, F, Bb, Eb, Ab, Db, Gb, B, E, A, D, and G. Each staff contains a major scale and its corresponding arpeggios. The scales are written in treble clef with a common time signature (C). The tempo is marked as $\text{♩} = 120$. The key signatures for each instrument are: C (no sharps or flats), F (one flat), Bb (two flats), Eb (three flats), Ab (four flats), Db (five flats), Gb (five flats and one sharp), B (two sharps), E (three sharps), A (three sharps), D (two sharps), and G (one sharp). The scales are written in a consistent pattern: the first measure is the scale starting on the instrument's fundamental, and the second measure is the scale starting on the second degree. The arpeggios are written in a consistent pattern: the first measure is the arpeggio starting on the instrument's fundamental, and the second measure is the arpeggio starting on the second degree. The score is revised in 2012.

Minor Scales for All State Band Auditions

Treble Clef Instruments

Revised 2012

♩ = 120

Two Octaves

C harmonic minor

Musical notation for the C harmonic minor scale, two octaves, treble clef. The scale is written in a single line of music, starting on middle C (C4) and ending on C6. The notes are C4, B3, A3, G3, F3, E3, D3, C3, B2, A2, G2, F2, E2, D2, C2, B1, A1, G1, F1, E1, D1, C1, B0, A0, G0, F0, E0, D0, C0, B-1, A-1, G-1, F-1, E-1, D-1, C-1, B-2, A-2, G-2, F-2, E-2, D-2, C-2, B-3, A-3, G-3, F-3, E-3, D-3, C-3, B-4, A-4, G-4, F-4, E-4, D-4, C-4, B-5, A-5, G-5, F-5, E-5, D-5, C-5, B-6, A-6, G-6, F-6, E-6, D-6, C-6. The notation includes a treble clef, a key signature of two flats (Bb and Eb), and a common time signature (C). The scale is written in a single line of music, starting on middle C (C4) and ending on C6. The notes are C4, B3, A3, G3, F3, E3, D3, C3, B2, A2, G2, F2, E2, D2, C2, B1, A1, G1, F1, E1, D1, C1, B0, A0, G0, F0, E0, D0, C0, B-1, A-1, G-1, F-1, E-1, D-1, C-1, B-2, A-2, G-2, F-2, E-2, D-2, C-2, B-3, A-3, G-3, F-3, E-3, D-3, C-3, B-4, A-4, G-4, F-4, E-4, D-4, C-4, B-5, A-5, G-5, F-5, E-5, D-5, C-5, B-6, A-6, G-6, F-6, E-6, D-6, C-6. The notation includes a treble clef, a key signature of two flats (Bb and Eb), and a common time signature (C). The scale is written in a single line of music, starting on middle C (C4) and ending on C6.

A melodic minor

Musical notation for the A melodic minor scale, two octaves, treble clef. The scale is written in a single line of music, starting on A3 and ending on A6. The notes are A3, G3, F3, E3, D3, C3, B2, A2, G2, F2, E2, D2, C2, B1, A1, G1, F1, E1, D1, C1, B0, A0, G0, F0, E0, D0, C0, B-1, A-1, G-1, F-1, E-1, D-1, C-1, B-2, A-2, G-2, F-2, E-2, D-2, C-2, B-3, A-3, G-3, F-3, E-3, D-3, C-3, B-4, A-4, G-4, F-4, E-4, D-4, C-4, B-5, A-5, G-5, F-5, E-5, D-5, C-5, B-6, A-6. The notation includes a treble clef, a key signature of two sharps (F# and C#), and a common time signature (C). The scale is written in a single line of music, starting on A3 and ending on A6.

One Octave

C harmonic minor

Musical notation for the C harmonic minor scale, one octave, treble clef. The scale is written in a single line of music, starting on middle C (C4) and ending on C5. The notes are C4, B3, A3, G3, F3, E3, D3, C3, B2, A2, G2, F2, E2, D2, C2, B1, A1, G1, F1, E1, D1, C1, B0, A0, G0, F0, E0, D0, C0, B-1, A-1, G-1, F-1, E-1, D-1, C-1, B-2, A-2, G-2, F-2, E-2, D-2, C-2, B-3, A-3, G-3, F-3, E-3, D-3, C-3, B-4, A-4, G-4, F-4, E-4, D-4, C-4, B-5, A-5, G-5, F-5, E-5, D-5, C-5. The notation includes a treble clef, a key signature of two flats (Bb and Eb), and a common time signature (C). The scale is written in a single line of music, starting on middle C (C4) and ending on C5.

A melodic minor

Musical notation for the A melodic minor scale, one octave, treble clef. The scale is written in a single line of music, starting on A3 and ending on A4. The notes are A3, G3, F3, E3, D3, C3, B2, A2, G2, F2, E2, D2, C2, B1, A1, G1, F1, E1, D1, C1, B0, A0, G0, F0, E0, D0, C0, B-1, A-1, G-1, F-1, E-1, D-1, C-1, B-2, A-2, G-2, F-2, E-2, D-2, C-2, B-3, A-3, G-3, F-3, E-3, D-3, C-3, B-4, A-4. The notation includes a treble clef, a key signature of two sharps (F# and C#), and a common time signature (C). The scale is written in a single line of music, starting on A3 and ending on A4.

Bass Clef Instruments

One Octave

C harmonic minor

Musical notation for the C harmonic minor scale, one octave, bass clef. The scale is written in a single line of music, starting on middle C (C4) and ending on C5. The notes are C4, B3, A3, G3, F3, E3, D3, C3, B2, A2, G2, F2, E2, D2, C2, B1, A1, G1, F1, E1, D1, C1, B0, A0, G0, F0, E0, D0, C0, B-1, A-1, G-1, F-1, E-1, D-1, C-1, B-2, A-2, G-2, F-2, E-2, D-2, C-2, B-3, A-3, G-3, F-3, E-3, D-3, C-3, B-4, A-4, G-4, F-4, E-4, D-4, C-4, B-5, A-5, G-5, F-5, E-5, D-5, C-5. The notation includes a bass clef, a key signature of two flats (Bb and Eb), and a common time signature (C). The scale is written in a single line of music, starting on middle C (C4) and ending on C5.

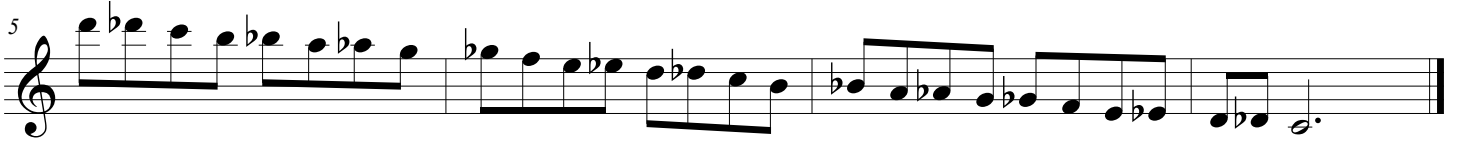
A melodic minor

Musical notation for the A melodic minor scale, one octave, bass clef. The scale is written in a single line of music, starting on A3 and ending on A4. The notes are A3, G3, F3, E3, D3, C3, B2, A2, G2, F2, E2, D2, C2, B1, A1, G1, F1, E1, D1, C1, B0, A0, G0, F0, E0, D0, C0, B-1, A-1, G-1, F-1, E-1, D-1, C-1, B-2, A-2, G-2, F-2, E-2, D-2, C-2, B-3, A-3, G-3, F-3, E-3, D-3, C-3, B-4, A-4. The notation includes a bass clef, a key signature of two sharps (F# and C#), and a common time signature (C). The scale is written in a single line of music, starting on A3 and ending on A4.

All State Chromatic Scales

High School - Revised 2012

Alto, Tenor, Baritone Saxophone



Bb Cornet, Trumpet, F Horn, Baritone T.C.

